

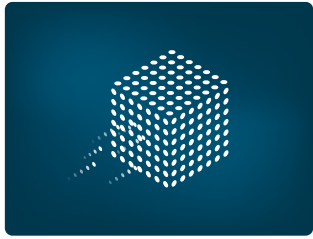
# Edge-Optimized SSDs - The Perfect Combination of Industrial & Server SSDs



Edge servers place a heavy load on SSDs. Sandwiched between the cloud and edge devices, edge servers bring computation and storage to where the data is generated, enabling better data control and reduced costs, faster insights and actions, and continuous operations. SSDs for edge servers need unique features to keep pace in these challenging environments. Innodisk's edge-optimized SSDs feature core technologies from industrial and server SSDs, fine-tuned for edge server applications.

## High Performance Solutions for Edge Computing

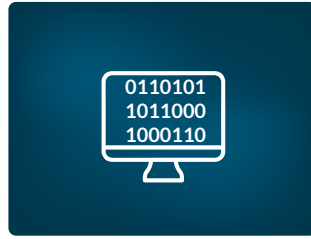
A perfect combination of the features and advantages of industrial and server SSDs Available in 2.5", M.2 (P80), M.2 (P110), E1.s, and U.2 form factors for edge servers need unique features to keep pace in these challenging environments.



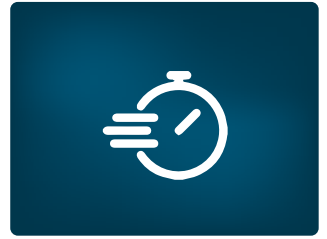
High Input/Output Operations  
Per Second (IOPS)



High Reliability



High Diskful  
Writes Per Day (DWPD)



Low Latency



Standard &  
Wide Temperature



Thermal Management



High Security



Customization

| Model Name                    | 3TS6-P   | 3TS9-P                                   | 4TS2-P   |
|-------------------------------|--|--|--|
| Form Factor                   | 2.5" SSD/M.2 S80   | 2.5" SSD/M.2 S80                         | U.2 SSD<br>M.2 P80/M.2 P110<br>E1.s 9.5mm/15mm |
| Interface                     | SATA III 6.0Gb/s   | SATA III 6.0Gb/s                         | PCIe Gen4 x4                                   |
| Flash Type                    | 3D TLC   | 3D TLC                                   | 3D TLC   |
| Capacity                      | 200GB~3.2TB  | 2.5" SSD:200GB~6.4TB<br>M.2: 200GB~3.2TB | U.2: 400GB~6.4TB<br>M.2/E1.s: 400GB~3.2TB      |
| Max. Power Consumption        | 5.5W (Max.)  | 5.5W (Max.)                              | 13.3W (Max.)                                   |
| Sequential R/W (MB/sec, max.) | 540/570  | 550/520                                  | 7000/6000                                      |
| Thermal Sensor                | Y  | Y  | Y  |
| External DRAM Buffer          | Y  | Y  | Y  |
| S.M.A.R.T.                    | Y  | Y  | Y  |
| Warranty                      | 5 Years  |  |  |
| Operation Temperature         | Standard Temp. (0°C ~ +70°C) / Wide Temp. (-40°C ~ +85°C)    |  |  |
| Features                      | iCell*/AES*/TCG OPAL*/E2E Data protection/Thermal management |  |  |

\*: Optional Features

### Headquarter

#### Innodisk Corporation

5F., No. 237, Sec. 1, Datong Rd., Xizhi Dist., New Taipei City 221, Taiwan (R.O.C.)

TEL : +886-2-7703-3000 FAX : +886-2-7703-3555

E-mail : sales@innodisk.com



©2023 Sep. Innodisk Corporation